

Squirmers with swirl: a model for *Volvox* swimming

T. J. Pedley^{1,†}, D. R. Brumley^{2,3} and R. E. Goldstein¹

¹Department of Applied Mathematics and Theoretical Physics, University of Cambridge, Centre for Mathematical Sciences, Wilberforce Road, Cambridge CB3 0WA, UK

²Ralph M. Parsons Laboratory, Department of Civil and Environmental Engineering, Massachusetts Institute of Technology, Cambridge, MA 02139, USA

³Department of Civil, Environmental and Geomatic Engineering, ETH Zurich, 8093 Zurich, Switzerland

(Received 2 December 2015; revised 13 April 2016; accepted 24 April 2016;
first published online 31 May 2016)

Colonies of the green alga *Volvox* are spheres that swim through the beating of pairs of flagella on their surface somatic cells. The somatic cells themselves are mounted rigidly in a polymeric extracellular matrix, fixing the orientation of the flagella so that they beat approximately in a meridional plane, with axis of symmetry in the swimming direction, but with a roughly 20° azimuthal offset which results in the eponymous rotation of the colonies about a body-fixed axis. Experiments on colonies of *Volvox carteri* held stationary on a micropipette show that the beating pattern takes the form of a symplectic metachronal wave (Brumley *et al. Phys. Rev. Lett.*, vol. 109, 2012, 268102). Here we extend the Lighthill/Blake axisymmetric, Stokes-flow model of a free-swimming spherical squirmer (Lighthill *Commun. Pure Appl. Maths*, vol. 5, 1952, pp. 109–118; Blake *J. Fluid Mech.*, vol. 46, 1971*b*, pp. 199–208) to include azimuthal swirl. The measured kinematics of the metachronal wave for 60 different colonies are used to calculate the coefficients in the eigenfunction expansions and hence predict the mean swimming speeds and rotation rates, proportional to the square of the beating amplitude, as functions of colony radius. As a test of the squirmer model, the results are compared with measurements (Drescher *et al. Phys. Rev. Lett.*, vol. 102, 2009, 168101) of the mean swimming speeds and angular velocities of a different set of 220 colonies, also given as functions of colony radius. The predicted variation with radius is qualitatively correct, but the model underestimates both the mean swimming speed and the mean angular velocity unless the amplitude of the flagellar beat is taken to be larger than previously thought. The reasons for this discrepancy are discussed.

Key words: biological fluid dynamics, micro-organism dynamics, swimming/flying

1. Introduction

Volvox is a genus of algae with spherical, free-swimming colonies consisting of up to 50 000 surface somatic cells embedded in an extracellular matrix and a small

† Email address for correspondence: t.j.pedley@damtp.cam.ac.uk

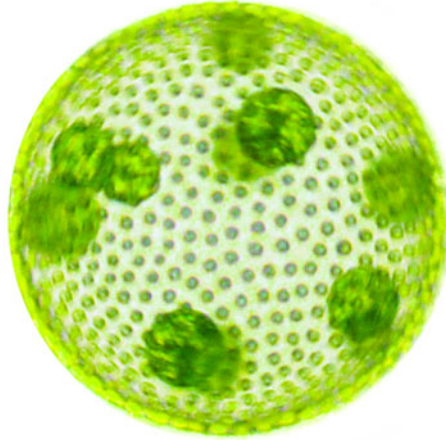


FIGURE 1. A colony of *Volvox carteri*. Small green dots are the somatic cells on the outside (2000–6000 for *V. carteri*); larger green spheroids are the interior daughter colonies. The photograph is taken from above, as the colony swims upwards towards the camera.

number of interior germ cells which develop to become the next generation (figure 1). Discovered by van Leeuwenhoek (1700), who marvelled at their graceful swimming, it was named by Linnaeus (1758) for its characteristic spinning motion. The colony swims in a direction parallel to its anterior–posterior axis thanks to the beating of a pair of flagella on each somatic cell. All flagella exhibit an approximately coplanar, meridional beat, with the power stroke directed towards the rear, i.e. from the north pole towards the south pole, except that the plane of beating is in fact offset from a purely meridional plane by an angle of 10–20°. It is believed that this offset causes the observed rotation (Hoops 1993, 1997). The colonies are about 0.3% denser than water, and swim upwards in still water; this is because the relatively dense interior cells are clustered towards the rear, so when the anterior–posterior axis is deflected from vertical, the colony experiences a restoring gravitational torque that competes with a viscous torque to right the colony on a timescale of ~ 10 s. It is remarkable that a typical, free-swimming *Volvox* colony swims in a constant (vertical) direction, suggesting axially symmetric coordination of the flagellar beating, and that it clearly rotates about the axis of symmetry.

1.1. Experimental background

During its 48-h life cycle, the size of a *Volvox* colony increases, though the number and size of somatic cells do not. Thus one would expect the sedimentation speed V of a colony whose swimming was arrested to increase with colony radius a_0 , while its upswimming speed U_1 would decrease, both because of the increase in V and because, even if it were neutrally buoyant, one would expect the viscous drag to increase with size and hence the swimming speed U to decrease. Presumably the angular velocity about the axis, Ω , would also decrease. Drescher *et al.* (2009) measured the swimming speeds, sedimentation speeds, and angular velocities of 78, 81 and 61 colonies of *V. carteri*, respectively, ranging in radius from about 100 μm to about 500 μm . The results are shown in figure 2, where indeed both U_1 and Ω are seen to decrease with a_0 , while V increases. The expected swimming speed if

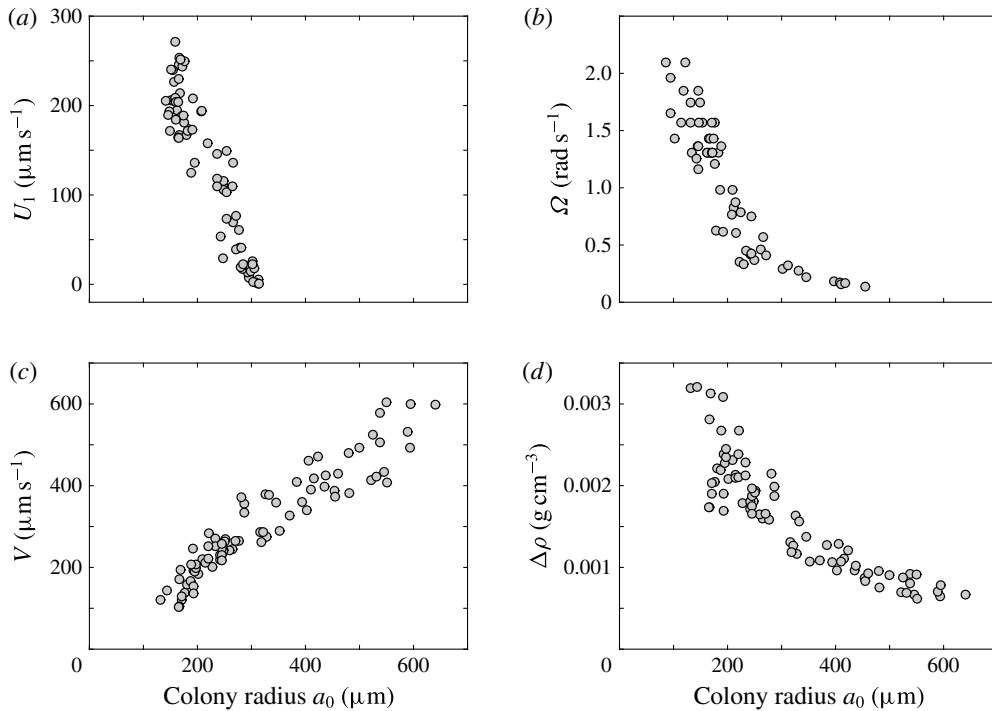


FIGURE 2. Swimming properties of *V. carteri* as a function of colony radius a_0 . Measured values of the (a) upswimming speed U_1 , (b) angular velocity Ω and (c) sedimentation speed V , as well as (d) the deduced density offset $\Delta\rho = 9\mu V/2ga_0^2$ compared with the surrounding medium. Adapted from Drescher *et al.* (2009).

the colony were neutrally buoyant would be $U = U_1 + V$ (Solari *et al.* 2006), where linearity is expected because the Reynolds number of even the largest colony is less than 0.1, so the fluid dynamics will be governed by the Stokes equations.

The purpose of this paper is to describe a model for *Volvox* swimming from which both U and Ω can be predicted, and to compare the predictions with the experiments of figure 2. The input to the model will be the fluid velocities generated by the flagellar beating as measured by Brumley *et al.* (2012, 2015a,b). Detailed measurements were made of the time-dependent flow fields produced by the beating flagella of numerous *V. carteri* colonies. Individual colonies were held in place on a micro-pipette in a $25 \text{ mm} \times 25 \text{ mm} \times 5 \text{ mm}$ glass observation chamber; the colonies were attached at the equator and arranged so that the symmetry axis of a colony was perpendicular both to the pipette and to the field of view of the observing microscope. The projection of the flow field onto the focal plane of the microscope was visualised by seeding the fluid medium with $0.5 \mu\text{m}$ polystyrene microspheres at a volume fraction of 2×10^{-4} , and 30-second-long high-speed movies were taken. The (projected) velocity field was measured using particle image velocimetry (PIV); a total of 60 different colonies were investigated, ranging in radius from $48 \mu\text{m}$ to $251 \mu\text{m}$ (mean $144 \pm 43 \mu\text{m}$), the distribution of which is shown in figure 3.

One example of the time-averaged magnitude of the velocity distribution is shown in figure 4(a). This is a maximum near the equator because the flagellar beating drives a non-zero mean flow past the colony, parallel to the axis of symmetry and directed

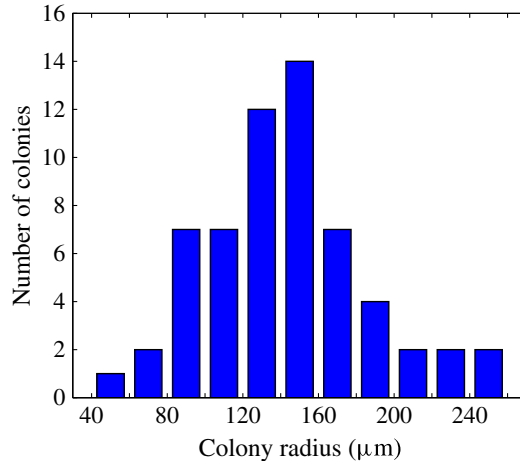


FIGURE 3. Distribution of colonies by radius, for which the metachronal wave properties are characterised. Adapted from figure 1(b) of Brumley *et al.* (2015a).

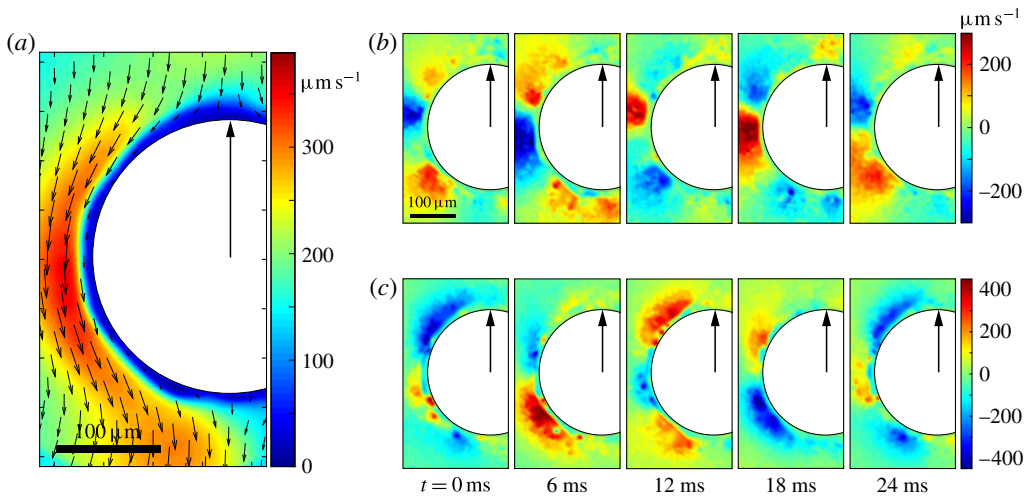


FIGURE 4. Experimental flow fields. (a) Magnitude (colour) and direction (arrows) of the time-averaged velocity field measured with PIV. Radial u'_r (b) and tangential u'_θ (c) components of the unsteady fluid velocity field shown at various times through one flagellar beating cycle. Parts (a) and (b) are adapted from figures 1(c) and (d), respectively, of Brumley *et al.* (2015a).

from front to back. This is consistent with the fact that untethered colonies swim forwards, parallel to the axis.

More interesting are the perturbations to this mean flow. Time-dependent details of the velocity field can be seen in movies S1 and S2 which are available at <http://dx.doi.org/10.1017/jfm.2016.306>. Close to the colony surface, backwards and forwards motion, driven by the beating flagella, can be clearly seen; further away the flow is nearly steady. Figure 4 contains a series of snapshots showing unsteady

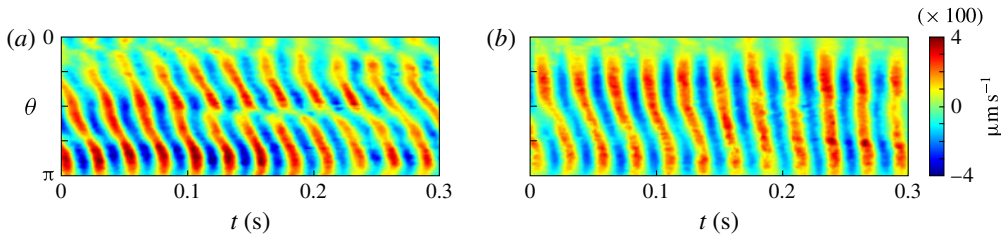


FIGURE 5. Kymographs of radial u'_r (a) and tangential u'_θ (b) velocity around *Volvox* colonies, measured at a radius of $r = 1.3 \times a_0$.

components of (b) the radial velocity, u'_r , and (c) the tangential velocity, u'_θ . It is immediately evident that the maximum of radial velocity propagates as a wave from front to back, in the same direction as the power stroke of the flagellar beat: a symplectic metachronal wave (Sleigh 1962). This is further demonstrated in figure 5 which shows kymographs of u_r and u_θ measured at a distance $r = 1.3 \times a_0$ from the colony surface: the propagating wave is clearly seen in figure 5(a), which includes evidence of an interesting phase defect, while figure 5(b) suggests that the tangential velocity behaves more like a standing wave, dominated by the power stroke near the equator. (The mechanism underlying the coordination of the flagellar beats between the thousands of quite widely spaced somatic cells is itself thought to stem from the fluid mechanical interaction between them. Brumley *et al.* (2015a) developed a model for this coordination, as well as for phase defects; it will not be expanded on here.)

Each set of velocity measurements by Brumley *et al.* (2012) are projections onto a single meridional plane. However, the clear axial symmetry of a *Volvox* colony, freely swimming and spinning, indicates that it is reasonable to assume that the flagellar displacement and the consequent velocity fields are also axisymmetric. The fact that the colonies were held fixed means that a force and torque were applied to them while the measurements were being made. This may mean that the flagellar displacements, relative to the colony surface, differed from those for the same colony when swimming freely. The same goes for any constraints felt by a pinned colony due to the proximity of the chamber walls, though this effect is probably small since the largest colonies have diameter around 500 μm , about one tenth of the minimum chamber dimension. We have no direct evidence on these questions, and will assume that the two flagellar beats are the same.

The results of Brumley *et al.* (2012) show that a good fit to the observations of the radial velocity perturbations is given by the following simple form:

$$u'_r|_{r=1.3a_0} = \sigma a_0 \epsilon \cos(k\theta_0 - \sigma t), \quad (1.1)$$

where θ_0 is the polar angle, k, σ are the wavenumber and frequency of the wave, and ϵ is an amplitude parameter. The mean values of k, σ, ϵ over all of the colonies observed were $k = 4.7$, $\sigma = 203 \text{ rad s}^{-1}$, $\epsilon \approx 0.035$. Such data for each colony measured will make up the full input to our model below.

1.2. Theoretical background

The model will be an extension to the swirling case of the spherical envelope (or ‘squirmers’) model for the propulsion of ciliated protozoa introduced by Lighthill (1952) and Blake (1971b). When the surface of a cell is densely covered with beating

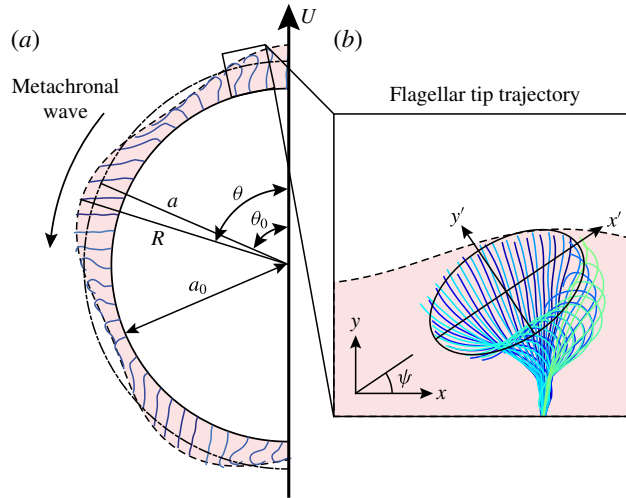


FIGURE 6. (a) Schematic diagram of a spherical *Volvox* colony at one instant in time, with beating flagella and the envelope of flagellar tips. The radius of the extracellular matrix in which the flagella are embedded is a_0 . The mean radius of the envelope is a ; (R, θ) are the coordinates of a surface element whose average position is (a, θ_0) . (Adapted from Blake (1971*b*), but replotted with the experimentally determined metachronal wavenumber.) (b) Measured tip trajectory over multiple beats of a single *Volvox* flagellum. The trajectory is fitted with an ellipse, which is rotated at an angle ψ with respect to the local colony surface.

cilia, as for the protist *Opalina* for example, it is a very good approximation to treat the flow around it as being driven by the displacement of a stretching flexible sheet, attached to the tips of all of the cilia and moving with them. The sheet will undergo radial and tangential wave-like displacements, and it needs to stretch to accommodate temporal variations between the displacements of neighbouring cilia tips (figure 6*a*). In the case of *Volvox carteri* the tips of the beating flagella are not very close together; for a colony of radius $200\ \mu\text{m}$, the average spacing between somatic cells is $\sim 20\ \mu\text{m}$, comparable with the flagellar length, $\langle L \rangle = 19.9\ \mu\text{m}$ (Brumley *et al.* 2014), so the envelope model may well be somewhat inaccurate. As indicated above, the new feature of our model is the introduction of azimuthal swirl to the envelope model.

The theory will be given in the next two sections, first extending the Lighthill–Blake model to include swirl, and second applying the model to *Volvox* on the basis of the data of Brumley *et al.* (2012). The objective is to calculate the mean swimming speed \bar{U} and mean angular velocity $\bar{\Omega}$, and test the model by comparison with the measurements of Drescher *et al.* (2009). The final section will include a discussion of discrepancies and the model’s limitations.

2. Theory for squirmers with swirl

In the original, zero-Reynolds-number, spherical-envelope model of ciliated micro-organisms (Lighthill 1952; Blake 1971*b*), the radial and tangential Eulerian velocity components (u_r, u_θ) are written as infinite series of eigensolutions of the Stokes equation:

$$u_r(r, \theta_0) = -U \cos \theta_0 + A_0 \frac{a^2}{r^2} P_0 + \frac{2}{3} (A_1 + B_1) \frac{a^3}{r^3} P_1 + \sum_{n=2}^{\infty} \left[\left(\frac{1}{2} n \frac{a^n}{r^n} - \left(\frac{1}{2} n - 1 \right) \frac{a^{n+2}}{r^{n+2}} \right) A_n P_n + \left(\frac{a^{n+2}}{r^{n+2}} - \frac{a^n}{r^n} \right) B_n P_n \right] \quad (2.1a)$$

$$u_\theta(r, \theta_0) = U \sin \theta_0 + \frac{1}{3} (A_1 + B_1) \frac{a^3}{r^3} V_1 + \sum_{n=2}^{\infty} \left[\left(\frac{1}{2} n \frac{a^{n+2}}{r^{n+2}} - \left(\frac{1}{2} n - 1 \right) \frac{a^n}{r^n} \right) B_n V_n + \frac{1}{2} n \left(\frac{1}{2} n - 1 \right) \left(\frac{a^n}{r^n} - \frac{a^{n+2}}{r^{n+2}} \right) A_n V_n \right], \quad (2.1b)$$

assuming axial symmetry. Here (r, θ_0) are spherical polar coordinates, the $P_n(\cos \theta_0)$ are Legendre polynomials, and

$$V_n(\cos \theta_0) = \frac{2}{n(n+1)} \sin \theta_0 P'_n(\cos \theta_0). \quad (2.2)$$

A trace of a typical flagellar beat is shown in figure 6(b), adapted from Brumley *et al.* (2014), where it can be seen that the trajectory of the tip is approximately elliptical, with centre about two-thirds of the flagellar length from the surface of the extracellular medium. Thus, a is taken to be the mean radius of a flagellar tip, so we take $a \approx a_0 + 2L/3$, where L is the length of a flagellum. With the origin fixed at the centre of the sphere, $-U(t)$ is the speed of the flow at infinity (i.e. U is the instantaneous swimming speed of the sphere). If the sphere is taken to be neutrally buoyant, it experiences no external force, so the Stokeslet term must be zero, and

$$U = \frac{2}{3} B_1 - \frac{1}{3} A_1 \quad (2.3)$$

(Blake 1971b). Corresponding to the velocity field (2.1), the velocity components on the sphere $r = a$ are

$$u_r(a, \theta_0) = \sum_{n=0}^{\infty} A_n(t) P_n(\cos \theta_0), \quad u_\theta(a, \theta_0) = \sum_{n=1}^{\infty} B_n(t) V_n(\cos \theta_0). \quad (2.4a, b)$$

From this we can see that A_1 should be zero, because it corresponds to longitudinal translation of the centre, which is incorporated into U . However, we follow Lighthill (1952) and not Blake (1971b) in retaining a non-zero A_0 . Blake wished to prohibit any volume change in his squirmers, which is of course physically correct, although if there really were an impenetrable membrane covering the flagellar tips and if, say, all of the flagella beat synchronously, the envelope of their tips would experience a small variation in volume, so A_0 should not be zero. Our choice of sinusoidal velocity and displacement wave, equations (1.1) and (3.1) below, in fact requires a non-zero A_0 . It turns out that for the parameter values applicable to *Volvox* the presence or absence of this term makes little difference to the predictions of mean swimming speed, and it does not affect the angular velocity anyway.

The surface velocities in (2.4) must in fact be generated by the motion of material elements of the spherical envelope, representing the tips of the beating flagella. In the Lighthill–Blake analysis, the envelope is represented by the following expressions for the Lagrangian coordinates (R, θ) of the material elements:

$$R - a = a\epsilon \sum_{n=0}^{\infty} \alpha_n(t) P_n(\cos \theta_0), \quad (2.5a)$$

$$\theta - \theta_0 = \epsilon \sum_{n=1}^{\infty} \beta_n(t) V_n(\cos \theta_0). \quad (2.5b)$$

The functions $\alpha_n(t)$ and $\beta_n(t)$ are supposed to be oscillatory functions of time with zero mean, and the amplitude of the oscillations, ϵ , is taken to be small. The most intricate part of the theory is the calculation of the A_n and B_n in (2.4) in terms of the α_n and β_n in (2.5). This will be outlined below.

The new feature that we introduce in this paper is to add axisymmetric swirl velocities and azimuthal (ϕ) displacements to the above. The ϕ component of the Stokes equation is

$$\nabla^2 u_\phi - \frac{u_\phi}{r^2 \sin^2 \theta_0} = 0 \quad (2.6)$$

and the general axisymmetric solution that tends to zero at infinity is

$$u_\phi(r, \theta_0) = \sum_{n=1}^{\infty} a C_n \frac{a^{n+1}}{r^{n+1}} V_n(\cos \theta_0), \quad (2.7)$$

equal to

$$u_\phi(a, \theta_0) = \sum_{n=1}^{\infty} a C_n V_n(\cos \theta_0) \quad (2.8)$$

on $r = a$. Now the total torque about the axis of symmetry is $-8\pi\mu a^3 C_1$ and, since the sphere is our model for a free-swimming *Volvox* colony, this, like the total force, must be zero, i.e.

$$C_1 \equiv 0. \quad (2.9)$$

Analogous to (2.5), the ϕ displacement of the material point (R, θ, ϕ) on the spherical envelope is taken to be $\phi - \phi_0$ where

$$(\phi - \phi_0) \sin \theta_0 = \int \Omega dt \sin \theta_0 + \epsilon \sum_{n=1}^{\infty} \gamma_n(t) V_n(\cos \theta_0). \quad (2.10)$$

Here ϕ_0 is fixed on the rotating sphere, and Ω is the instantaneous angular velocity of the sphere. The general solution for a squirmer with non-axisymmetric (ϕ -dependent) squirming and swirling has been given in terms of vector spherical harmonics by Ghose & Adhikari (2014), Pak & Lauga (2014), Felderhof (2016) and Felderhof & Jones (2016). They all calculated the body's translational and angular velocities corresponding to an arbitrary distribution of velocities on $r = a$, but only Felderhof related the surface velocities to Lagrangian displacements of surface elements.

The relations between the Eulerian velocities (2.1), (2.7) and the Lagrangian displacements (2.5), (2.10), from which A_n , B_n , C_n and U , Ω are to be derived from α_n , β_n , γ_n , are

$$u_r(R, \theta) = \dot{R}, \quad u_\theta(R, \theta) = R\dot{\theta}, \quad u_\phi(R, \theta) = R \sin \theta \dot{\phi}, \quad (2.11a-c)$$

where an overdot represents the time derivative. Blake (1971b) performed the analysis for the r and θ velocities; here we illustrate the method by deriving the relation between the C_n and the γ_n .

The analysis is developed in powers of the amplitude ϵ , so we take

$$C_n = \epsilon C_n^{(1)} + \epsilon^2 C_n^{(2)} + \dots, \tag{2.12a}$$

$$\Omega = \epsilon \Omega^{(1)} + \epsilon^2 \Omega^{(2)} + \dots. \tag{2.12b}$$

At leading order, $O(\epsilon)$, equations (2.11c) and (2.10) give

$$C_1^{(1)} = \Omega^{(1)} + \dot{\gamma}_1, \quad C_n^{(1)} = \dot{\gamma}_n \quad (n > 1). \tag{2.13a,b}$$

Immediately, therefore, we see from (2.9) that $\Omega^{(1)} = -\dot{\gamma}_1$, which has zero mean, so the mean angular velocity, like the mean translational speed, is $O(\epsilon^2)$. At second order, the fact that $(R, \theta) \neq (a, \theta_0)$ is important in the expression for the velocity field:

$$\begin{aligned} u_\phi(R, \theta) &= u_\phi(a, \theta_0) + (R - a) \left. \frac{\partial u_\phi}{\partial r} \right|_{a, \theta_0} + (\theta - \theta_0) \left. \frac{\partial u_\phi}{\partial \theta} \right|_{a, \theta_0} + \dots \\ &= R \sin \theta \dot{\phi}. \end{aligned} \tag{2.14}$$

Substituting for R, θ, ϕ gives

$$\begin{aligned} &\sum_{n=1}^{\infty} (\epsilon C_n^{(1)} + \epsilon^2 C_n^{(2)}) V_n - \epsilon^2 \sum_{n=0}^{\infty} \alpha_n P_n \sum_{m=2}^{\infty} (m+1) \dot{\gamma}_m V_m \\ &+ \epsilon^2 \sum_{n=1}^{\infty} \beta_n V_n \sum_{m=2}^{\infty} \dot{\gamma}_m \left(2P_m - \frac{\cos \theta_0}{\sin \theta_0} V_m \right) \\ &= \epsilon \sin \theta_0 \left(1 + \epsilon \sum_{n=0}^{\infty} \alpha_n P_n + \epsilon \frac{\cos \theta_0}{\sin \theta_0} \sum_{n=1}^{\infty} \beta_n V_n \right) \\ &\quad \times \left(\Omega^{(1)} + \epsilon \Omega^{(2)} + \frac{1}{\sin \theta_0} \sum_{m=1}^{\infty} \dot{\gamma}_m V_m \right). \end{aligned} \tag{2.15}$$

Taking the $O(\epsilon^2)$ terms in this equation, multiplying by $\sin^2 \theta_0$ and integrating from $\theta_0 = 0$ to $\theta_0 = \pi$ (recalling that $C_1^{(2)} = 0$), gives the following explicit expression for $\Omega^{(2)}$:

$$\begin{aligned} \Omega^{(2)} &= -\frac{4}{5} \beta_1 \dot{\gamma}_2 + \sum_{n=2}^{\infty} \frac{3}{(2n+1)(2n+3)} [-(n+3)\alpha_n \dot{\gamma}_{n+1} + (n+2)\alpha_{n+1} \dot{\gamma}_n] \\ &+ \sum_{n=2}^{\infty} \frac{6}{(2n+1)(2n+3)(n+1)} [-(n+3)\beta_n \dot{\gamma}_{n+1} + (n-1)\beta_{n+1} \dot{\gamma}_n]. \end{aligned} \tag{2.16}$$

(Some of the required integrals of products of P_n and V_m are given in appendix A.) The corresponding result for the second-order term in the translational velocity is

$$\begin{aligned} U^{(2)}/a &= \frac{2}{3} \alpha_0 \dot{\beta}_1 - \frac{8}{15} \alpha_2 \dot{\beta}_1 - \frac{2}{5} \dot{\alpha}_2 \beta_1 \\ &+ \sum_{n=2}^{\infty} \frac{(2n+4)\alpha_n \dot{\beta}_{n+1} - 2n\dot{\alpha}_n \beta_{n+1} - (6n+4)\alpha_{n+1} \dot{\beta}_n - (2n+4)\dot{\alpha}_{n+1} \beta_n}{(2n+1)(2n+3)} \end{aligned}$$

$$\begin{aligned}
& + \sum_{n=1}^{\infty} \frac{4(n+2)\beta_n\dot{\beta}_{n+1} - 4n\dot{\beta}_n\beta_{n+1}}{(n+1)(2n+1)(2n+3)} \\
& - \sum_{n=2}^{\infty} \frac{(n+1)^2\alpha_n\dot{\alpha}_{n+1} - (n^2 - 4n - 2)\alpha_{n+1}\dot{\alpha}_n}{(2n+1)(2n+3)}. \tag{2.17}
\end{aligned}$$

This is the formula given by Blake (1971*b*), except that he omitted the term involving α_0 which Lighthill (1952) included; Lighthill omitted some of the other terms.

A shortcut to predicting U and Ω was proposed by Stone & Samuel (1996), following Anderson & Prieve (1991). They used the reciprocal theorem for Stokes flow to relate the translation and rotation speeds of a deformable body with non-zero surface velocity \mathbf{u}' to the drag and torque on a rigid body of instantaneously identical shape, and derived the following results for a sphere of radius a , surface S :

$$\mathbf{U}(t) = -\frac{1}{4\pi a^2} \int_S \mathbf{u}' dS, \tag{2.18a}$$

$$\Omega(t) = -\frac{3}{8\pi a^3} \int_S \mathbf{n} \times \mathbf{u}' dS, \tag{2.18b}$$

where \mathbf{n} is the outward normal to the sphere. From the first of these (2.3) follows. It turns out not to be so simple to use these results for squirmers with non-zero radial deformations, because of the need to calculate the drag to $O(\epsilon^2)$ for the rigid deformed sphere.

3. Application to *Volvox*

In order to apply the above theory to *Volvox*, we need to specify the α_n , β_n , γ_n . This will be done by making use of the experimental results on the metachronal wave by Brumley *et al.* (2012), which led to (1.1) for the radial velocity distribution on the envelope of flagellar tips, plus assumptions about the tangential and azimuthal displacements. Following (1.1), we write the radial displacement as

$$R - a = a\epsilon \sin(k\theta_0 - \sigma t), \tag{3.1}$$

where k is the wavenumber, σ the radian frequency, and $\epsilon \ll 1$. Observations of flagellar beating show that a flagellar tip moves in an approximately elliptical orbit (see figure 6*b*). Thus, we may write

$$\theta - \theta_0 = \epsilon\delta \sin(k\theta_0 - \sigma t - \chi), \tag{3.2}$$

where figure 6(*b*) suggests $\delta \approx 1.68$ and the phase difference $\chi \approx -\pi/2$. The observation that the plane of beating of the flagella is offset by 10–20° from the meridional plane suggests that the functional form of the ϕ displacement, relative to the rotating sphere, is also given by (3.2), multiplied by a constant, τ , equal to the tangent of the offset angle. Together, then, equations (2.5), (2.10), (3.1) and (3.2) give

$$\alpha_0(t) + \sum_{n=2}^{\infty} \alpha_n(t) P_n(\cos \theta_0) = \sin(k\theta_0 - \sigma t) \tag{3.3a}$$

$$\sum_{n=1}^{\infty} \beta_n(t) V_n(\cos \theta_0) = \delta \sin(k\theta_0 - \sigma t - \chi) \tag{3.3b}$$

$$\sum_{n=1}^{\infty} \gamma_n(t) V_n(\cos \theta_0) = \tau \delta \sin(k\theta_0 - \sigma t - \chi). \tag{3.3c}$$

It can be seen immediately that $\gamma_n = \tau\beta_n$, so only (3.3a) and (3.3b) need to be solved for α_n and β_n . To do this requires expressions for $\sin k\theta_0$ and $\cos k\theta_0$ as series of both $P_n(\cos \theta_0)$ and $V_n(\cos \theta_0)$:

$$\sin k\theta_0 = \sum_{n=0}^{\infty} a_n^{(s)} P_n(\cos \theta_0) = \sum_{n=1}^{\infty} b_n^{(s)} V_n(\cos \theta_0) \tag{3.4a}$$

$$\cos k\theta_0 = \sum_{n=0}^{\infty} a_n^{(c)} P_n(\cos \theta_0) = \sum_{n=1}^{\infty} b_n^{(c)} V_n(\cos \theta_0). \tag{3.4b}$$

The results for $a_n^{(s)}$ etc. (see appendix B) are

$$a_n^{(s)} = -k(2n + 1)[1 + (-1)^{n+1} \cos k\pi] \eta(k, n) \tag{3.5a}$$

$$a_n^{(c)} = k(2n + 1)(-1)^{n+1} \sin k\pi \eta(k, n) \tag{3.5b}$$

$$b_n^{(s)} = \frac{1}{2}(-1)^{n+1} n(n + 1)(2n + 1) \sin k\pi \eta(k, n) \tag{3.5c}$$

$$b_n^{(c)} = \frac{1}{2}n(n + 1)(2n + 1)[1 + (-1)^{n+1} \cos k\pi] \eta(k, n), \tag{3.5d}$$

where

$$\eta(k, n) = \frac{\Gamma\left(\frac{n-k}{2}\right) \Gamma\left(\frac{n+k}{2}\right)}{16\Gamma\left(\frac{n+3-k}{2}\right) \Gamma\left(\frac{n+3+k}{2}\right)}, \tag{3.6}$$

and k is assumed not to be an integer. It then follows from (3.3) that

$$\alpha_n(t) = k(-1)^{n+1} (2n + 1)[(-1)^n \cos \sigma t - \cos(\sigma t - k\pi)] \eta(k, n) \tag{3.7a}$$

$$\begin{aligned} \beta_n(t) &= \frac{\gamma_n}{\tau} \\ &= \frac{\delta}{2} (-1)^{n+1} n(n + 1)(2n + 1)[(-1)^n \sin(\sigma t + \chi) - \sin(\sigma t + \chi - k\pi)] \eta(k, n). \end{aligned} \tag{3.7b}$$

Now we can put (3.7) into (2.16) and (2.17), take the mean values and obtain final results for the second-order contributions to the mean angular and translational velocities:

$$\begin{aligned} \bar{\Omega}^{(2)} &= 36\sigma\tau\delta^2 \eta(k, 1) \eta(k, 2) \sin k\pi \\ &+ \frac{3}{2} \sigma\tau\delta \sin k\pi \sum_{n=2}^{\infty} \eta(k, n) \eta(k, n + 1) (-1)^{n+1} (n + 1)(n + 2) \\ &\times [(2n + 3)k \sin \chi + 2\delta n(n + 1)], \end{aligned} \tag{3.8}$$

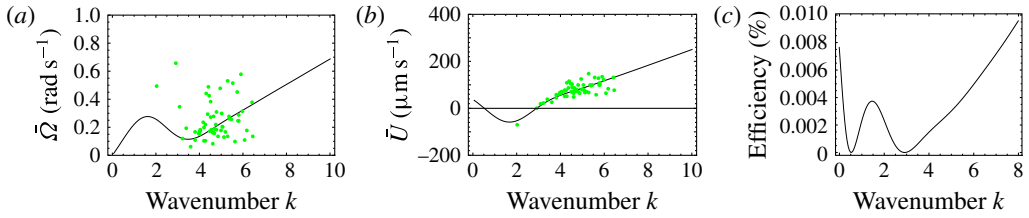


FIGURE 7. Predicted values of (a) mean angular velocity $\bar{\Omega}$, (b) mean swimming speed \bar{U} and (c) mechanical efficiency, E , as functions of the metachronal wavenumber k . Green dots are predictions of the squirmer model using the individually measured parameters for each of the 60 *Volvox* colonies. The solid lines are the predictions using the mean properties ($k = 4.7$, $\sigma = 203 \text{ rad s}^{-1}$). Other parameters include $\delta = 1.68$, $\chi = -\pi/2$, $\tau = \tan(20^\circ)$. Here the mean amplitude is $\epsilon \approx 0.035$, equivalent to flagella length $L = 20 \text{ }\mu\text{m}$.

$$\begin{aligned} \bar{U}^{(2)} = & -2a\sigma\delta\eta(k, 1)\eta(k, 2) \sin k\pi \left(12\delta + \frac{9}{k} \sin \chi \right) \\ & + a\sigma \sin k\pi \sum_{n=2}^{\infty} (-1)^n \eta(k, n)\eta(k, n+1) \\ & \times [2\delta^2 n(n+1)^2(n+2) + 2k\delta(n+1)(2n^2 + 3n+2) \sin \chi - k^2(2n^2 - 2n - 1)]; \end{aligned} \quad (3.9)$$

note that non-zero α_0 makes no difference to $\bar{\Omega}^{(2)}$. We may also note that calculations are made easier by recognising that

$$\eta(k, n)\eta(k, n+1) = \frac{1}{4((n+2)^2 - k^2)((n+1)^2 - k^2)(n^2 - k^2)}. \quad (3.10)$$

We now put in parameter values obtained from the experiments of Brumley *et al.* (2012) and compare the predicted values of \bar{U} and $\bar{\Omega}$ with the measurements of Drescher *et al.* (2009). Rather than merely using the average values of k and σ quoted by Brumley *et al.* ($k = 4.7$, $\sigma = 203 \text{ rad s}^{-1}$), we use the individual values for each of the 60 *Volvox* colonies from which the averages were obtained, together with their radii a . We also need the value of the dimensionless amplitude ϵ . As discussed above, the recorded radius a_0 is the radius of the surface of the extracellular matrix in which the somatic cells are embedded, and $a = a_0 + 2L/3$ and, hence, $\epsilon = L/(3a_0 + 2L) \approx L/3a_0$ (noting the typical orbit in figure 6b). Solari *et al.* (2011) have shown that flagellar length, as well as colony radius, increases as a colony of *V. carteri* or *V. barberi* ages. The values of L (14.9–20.5 μm) and a_0 quoted by them give values of ϵ between 0.029 and 0.038; thus, we may be justified in choosing $\epsilon = 0.035$ as normal. We also use the value of δ (1.68) quoted above, although trajectories of flagellar tips measured by Brumley *et al.* (2014) show a range of values of δ from 1.45 to 1.86. Moreover, we use $\tau = \tan(20^\circ) \approx 0.36$ although we do not have measurements of the offset angle for individual colonies.

The results for \bar{U} ($=\epsilon^2\bar{U}^{(2)}$) and $\bar{\Omega}$ ($=\epsilon^2\bar{\Omega}^{(2)}$) are plotted against k in figure 7, where the dots use the individual values of k , σ and a in each of the 60 *Volvox* colonies measured by Brumley *et al.* (2015a). The continuous curve uses the mean values of σ and a ; all results assume a flagellum of length $L = 20 \text{ }\mu\text{m}$, and a mean

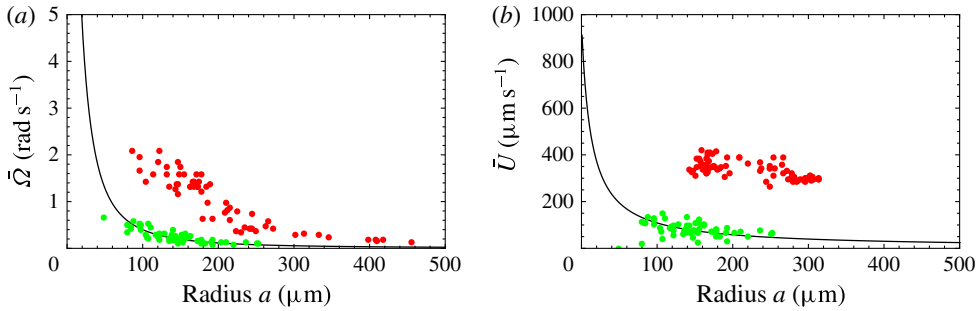


FIGURE 8. Predicted and measured values of (a) mean angular velocity $\bar{\Omega}$ and (b) mean swimming speed \bar{U} , as functions of colony radius. Green dots are predictions of this model, red dots are measurements (on a different population of colonies) by Drescher *et al.* (2009) (cf. figure 2). The solid line is the prediction from mean properties of the 60 colonies whose metachronal wave data have been used.

value of ϵ of 0.035. It is interesting that \bar{U} and, to a lesser extent, $\bar{\Omega}$ increase regularly with k over the range of measured values, but would vary considerably for lower values, even resulting in negative mean swimming speeds.

Also plotted, in figure 7(c), is the mechanical efficiency

$$E = 6\pi\mu a \bar{U}^2 / \bar{P}, \quad (3.11)$$

where P is the instantaneous rate of working of the stresses at the surface of the sphere,

$$P = 2\pi a^2 \int_0^\pi (u_r \sigma_{rr} + u_\theta \sigma_{r\theta} + u_\phi \sigma_{r\phi}) \sin \theta_0 \, d\theta_0, \quad (3.12)$$

and σ is the stress tensor. The formula for P in the absence of swirl was given by Blake (1971b, (9)), the additional, third, term due to swirl is equal to

$$16\mu\pi a^3 \sum_{n=2}^{\infty} \frac{(n+2)}{n(n+1)(2n+1)} C_n^2 \quad (3.13)$$

(see also Pak & Lauga 2014). Figure 7(c) shows a local maximum of E at $k \simeq 1.5$, corresponding to negative swimming speed, which may therefore be discounted. For $k > 3.0$, however, the efficiency increases with k . According to this model, then, it appears that the swimming mode of *Volvox* did not come about evolutionarily through energetic optimisation.

We plot the calculated \bar{U} and $\bar{\Omega}$ against a in figure 8. The green points represent colony-specific predictions using data from Brumley *et al.* (2015a) and the continuous curves correspond to the mean values of k , σ and ϵ referred to above. The red points represent the experimental values measured by Drescher *et al.* (2009), again using the individual values of \bar{U} , $\bar{\Omega}$ and a for each of the colonies measured (data kindly supplied by Dr Knut Drescher) rather than an average value. As noted in the introduction, with reference to figure 2, because the above theory assumes neutral buoyancy, the value quoted for U is the sum of the actual upwards swimming speed U_1 and the sedimentation speed V of an inactive colony of the same radius.

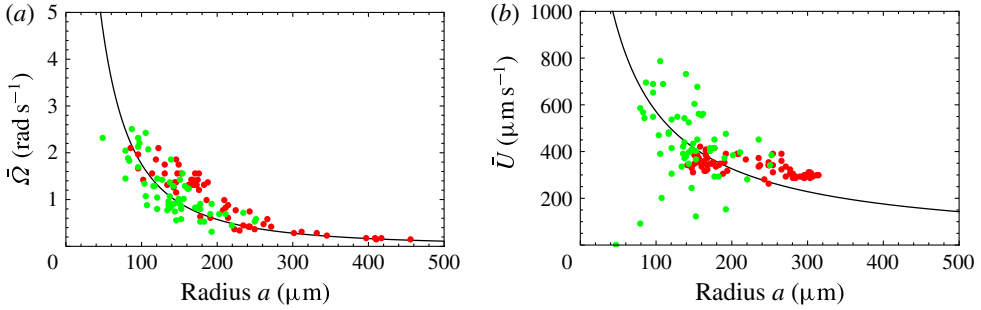


FIGURE 9. Same as figure 8 but with mean $\epsilon \approx 0.10$ ($L = 50 \mu\text{m}$).

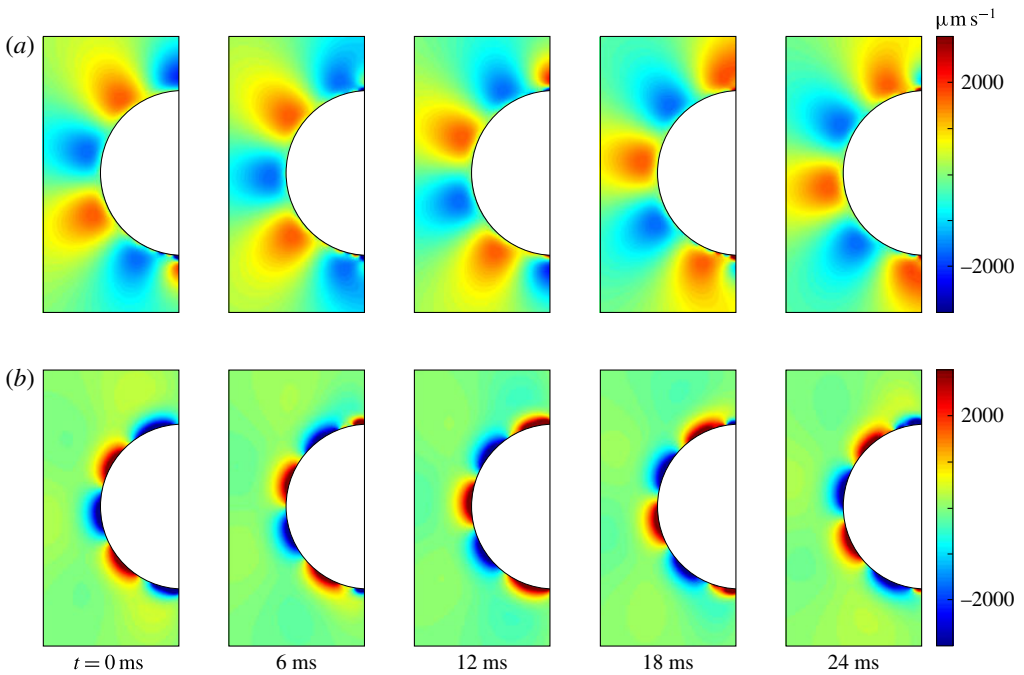


FIGURE 10. Squirming flow fields. Radial (*a*) and tangential (*b*) components of the fluid velocity field shown at various times through one flagellar beating cycle. The metachronal wave properties ((3.1) and (3.2)) are the same as for the average *Volvox* colony ($k = 4.7$, $\sigma = 203 \text{ rad s}^{-1}$, $a_0 = 144 \mu\text{m}$) and other parameters correspond to measured flagella and their trajectories ($L = 20 \mu\text{m}$, $\delta = 1.68$, $\chi = -\pi/2$).

In figure 8, the predictions for both \bar{U} and $\bar{\Omega}$ are significantly below the measured values, though the trend with increasing radius is similar. If we had taken the flagellar length L to be $50 \mu\text{m}$ instead of $20 \mu\text{m}$, the agreement would seem to be almost perfect (figure 9). In the next section we discuss in more detail aspects of the model that may need to be improved.

In addition to calculating $\bar{\Omega}$ and \bar{U} we can use the squirmer model to compute the time-dependent velocity field, for comparison with the measurements in figures 4 and 5. Figure 10 shows the radial and tangential velocities as functions of position at

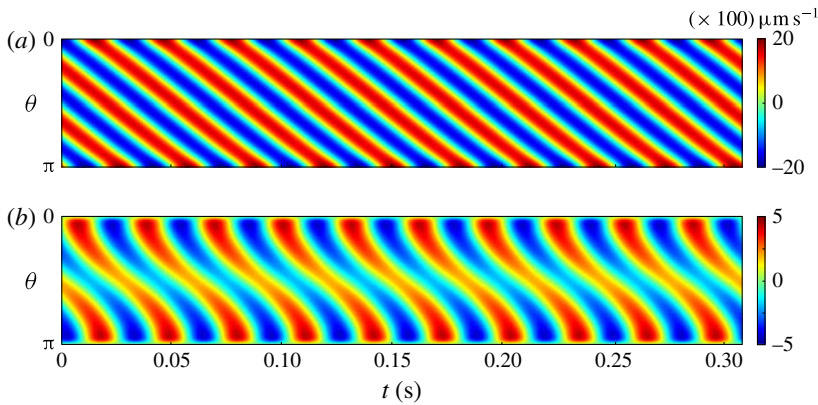


FIGURE 11. Squirmer kymographs. Radial u_r (a) and tangential u_θ (b) components of the flow, as functions of polar angle θ and time t , computed at the fixed radius ($r = 1.3 \times a_0$). Other parameters are the same as in figure 10.

different times during a cycle, for the mean values of k (4.7), σ (203 rad s⁻¹) and $a_0 = 144 \mu\text{m}$. Both velocity components show the metachronal wave, which is not surprising since that was used as input from (3.1) and (3.2). The figure also indicates that the tangential velocity component decays more rapidly with radial distance than the radial component. Calculated kymographs of u_r and u_θ at $r = 1.3 \times a_0$ are shown in figure 11, and can be compared with figure 5. There is good qualitative agreement between figures 10 and 11 and figures 4 and 5. Unlike the mean velocity, however, which is lower than measured, the amplitude of the calculated u_r or u_θ oscillations, scaling as $\sigma a_0 \epsilon$ from (2.11a-c) and (3.1), is about $1000 \mu\text{m s}^{-1}$, significantly larger than the measured value of about $300 \mu\text{m s}^{-1}$ (figure 5).

4. Discussion

The main discrepancy between the theoretical predictions of this paper and the experimental observations of Drescher *et al.* (2009) is that, although the maximum fluid velocity during a cycle, for the experimental parameter values, is much larger in the model than measured, the predicted mean velocity and angular velocity are significantly smaller than measured.

The envelope model is clearly a great oversimplification, because even in the context of single-celled ciliates, the cilia tips do not form a continuous surface at all times. Not only may there be wide spaces between neighbouring tips, but also some tips may, during their recovery stroke, be overshadowed by others in their power stroke, so the envelope is not single-valued (Brennen & Winet 1977). The latter is not a problem for *V. carteri*, because the flagellar pairs are more widely spaced, but that in itself adds to the former difficulty. Blake (1971b) argued that the envelope model would be a better approximation for symplectic metachronal waves than for antiplectic ones, because the tips are closer together during the power stroke, when their effect on the neighbouring fluid is greatest; this is especially true for a ciliate such as *Opalina*, but is less compelling in the case of *V. carteri*, for which typical cell (and, hence, flagellar) spacings are roughly equal to the flagellar length. The wide spacing between flagellar tips means that much of the ‘envelope’ is not actively engaged in driving fluid past the surface, and fluid can leak back between neighbours, so one would expect the

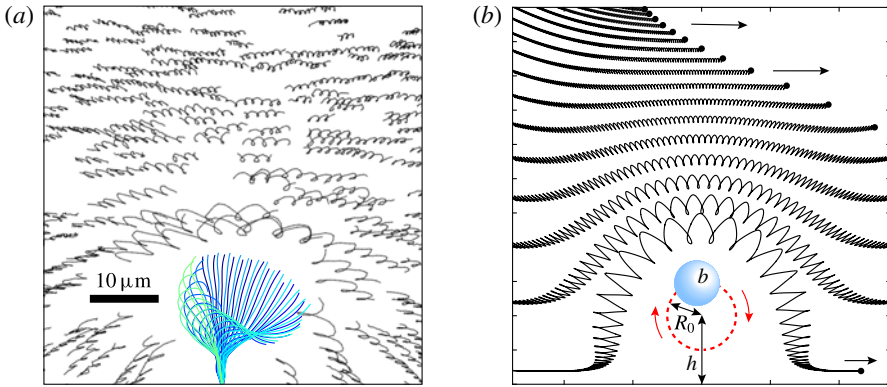


FIGURE 12. Particle paths in the vicinity of a flagellum. (a) Trajectories of $0.5\ \mu\text{m}$ passive tracers near an isolated *Volvox* flagellum held with a glass micropipette. The tracked flagellar waveform from several beats is also shown. (b) A sphere of radius b moving in a circular trajectory above and perpendicular to a no-slip boundary produces a time-dependent flow, which closely mimics that of a real flagellum. This simulation of 100 beats shows particle paths from various initial positions, and corresponds to $h = 10\ \mu\text{m}$, $R_0 = 5\ \mu\text{m}$, $b = 5\ \mu\text{m}$.

model to overestimate the fluid velocity, as it does if one considers the maximum instantaneous radial or tangential velocity. As reviewed elsewhere (Goldstein 2015), the volvocine algae include a range of species with differing interflagellar distances, some of which are significantly smaller than in *V. carteri*, and one can anticipate that future studies of those species may shed further light on the validity of the envelope model.

Why, therefore, is the mean velocity underestimated? It seems likely that the difference lies in the fact that each flagellum beats close to the no-slip surface of the extracellular matrix in which the somatic cells are embedded. In the power stroke, a flagellum is extended and its outer parts, in particular the tip, set neighbouring fluid particles in motion, over a range of several flagellar radii, at about the same speed as the tip. During the recovery stroke, on the other hand, the flagellum is much more curved, and the outer part remains roughly parallel to the colony surface (Blake 1972). Thus the drag exerted by the outer part of the flagellum on the fluid will be reduced by a factor approaching two compared with the power stroke. Moreover, this outer part is relatively close to the colony surface, and the no-slip condition on that surface will prevent fluid particles from moving at the same speed as the tip except very close to it. Both these factors mean that, although every element of the beating flagellum oscillates with zero mean displacement, the fluid velocities that it generates do not have zero mean.

As part of the experiments reported by Brumley *et al.* (2014), movies were taken of the motion of microspheres in the flow driven by a single beating flagellum on an isolated *V. carteri* somatic cell fixed on a micropipette. Experimental details are given briefly in appendix C. One of these movies is reproduced in movie S3, in which the difference between the fluid particle displacements in power and recovery strokes can be clearly seen. The trajectories of a number of the microspheres are shown in figure 12(a). Movie S4 and figure 12(b) show particle trajectories calculated from a very simple model (see appendix C), which consists of a small spherical bead following a circular orbit perpendicular to a nearby rigid plane (such an orbiting

bead model of a beating flagellum has been used extensively in recent years (Lenz & Ryskin 2006; Vilfan & Jülicher 2006; Niedermayer *et al.* 2008; Uchida & Golestanian 2011; Brumley *et al.* 2012, 2015a; Bruot & Cicuta 2016)). The similarity between the measured and computed trajectories is clear.

It is therefore evident that the net tangential velocity excess of the power stroke over the recovery stroke of *Volvox* flagella will be $O(\epsilon)$, so the mean velocity generated will be $O(\epsilon)$ not $O(\epsilon^2)$ as obtained from our squirmer model. That may be a more important limitation of the model than the wide spacing of the flagella. What is required, in future, is a detailed fluid dynamic analysis of an array of beating flagella on the surface of a sphere. This will be an extension of the so-called sublayer model of Blake (1972) and Brennen & Winet (1977), in which each cilium is represented as a linear distribution of Stokeslets whose strengths can be estimated using resistive force theory, or calculated more accurately as the solution of an integral equation using slender-body theory, taking account of the no-slip boundary by including the Stokeslet image system as derived for a planar boundary by Blake (1971a). This model is currently being developed.

Three other assumptions in the theory of this paper should be discussed. First is the choice of a sine wave to represent the displacement of the flagella tips ((3.1) and (3.2)). The choice necessitates some intricate calculations (§ 3 and appendix B) and it could be argued that the measurements of Brumley *et al.* (2012) are not sufficiently refined to justify it. Blake (1971b), among others, proposed that four terms in the Legendre polynomial expansions (2.4) would be accurate enough. Moreover, that would avoid the problem of non-zero values for A_0 and α_0 . However, a sine wave still seems the most natural choice for a propagating wave, and we have assumed it accordingly.

Another choice made here is to truncate the expansions of derived quantities at $O(\epsilon^2)$, which is likely to lead to errors at larger values of ϵ (Drummond 1966); however, even for figure 9, the assumed value of ϵ was less than 0.1, so this is unlikely to cause a significant error in figure 8. A third assumption in this paper is that the elliptical trajectory of each flagellar tip has its major axis parallel to the locally planar no-slip colony surface. In fact, it will in general be at a non-zero angle ψ to that surface (figure 6b). In that case the calculation becomes somewhat more cumbersome but no more difficult, as outlined in appendix D. If we choose $\psi = 30^\circ$, for example, the results for \bar{U} and $\bar{\Omega}$ are negligibly different from those in figure 8. The assumption that $\psi = 0$ is therefore not responsible for the discrepancy between theory and experiment in that figure.

Acknowledgements

The authors are very grateful to Dr K. Drescher, for the use of his original data in figure 8, Dr K.Y. Wan, for her data in figure 6(b), and Dr T. Montenegro-Johnson, for enlightening discussions on the future development of a complete sublayer model of *Volvox* swimming. We would also like to express our warm thanks to Professor John Blake for his careful reading of our manuscript and suggestions for its improvement. This work was supported by a Human Frontier Science Program Cross-Disciplinary Fellowship (D.R.B.) and a Senior Investigator Award from the Wellcome Trust (R.E.G.).

Supplementary movies

Supplementary movies are available at <http://dx.doi.org/10.1017/jfm.2016.306>.

Appendix A. Integrals required in the derivation of (2.16)

We seek to evaluate

$$J_{nm} = \int_0^\pi \sin^2 \theta_0 P_n(\cos \theta_0) V_m(\cos \theta_0) d\theta_0 \tag{A 1}$$

and

$$K_{nm} = \int_0^\pi \sin \theta_0 \cos \theta_0 V_n(\cos \theta_0) V_m(\cos \theta_0) d\theta_0, \tag{A 2}$$

where V_n is defined by (2.2), using the standard recurrence relations and differential equation for Legendre polynomials:

$$xP'_n = nP_n + P'_{n-1} \tag{A 3}$$

$$(2n + 1)xP_n = (n + 1)P_{n+1} + nP_{n-1} \tag{A 4}$$

$$\frac{d}{dx}[(1 - x^2)P'_n] = -n(n + 1)P_n. \tag{A 5}$$

Here a prime means d/dx and we do not explicitly give the x -dependence of $P_n(x)$. From (A 1),

$$J_{nm} = \frac{2}{m(m + 1)} \int_{-1}^1 P_n(1 - x^2)P'_m dx = 2 \int_{-1}^1 I_n(x)P_n dx \quad (\text{by parts}), \tag{A 6}$$

where

$$I_n(x) = \int^x P_n dx = \frac{xP_n - P_{n-1}}{n + 1}. \tag{A 7}$$

Hence,

$$J_{nm} = \frac{2}{2n + 1} \int_{-1}^1 P_m(P_{n+1} - P_{n-1}) dx = \frac{4}{2n + 1} \left(\frac{\delta_{m,n+1}}{2n + 3} - \frac{\delta_{m,n-1}}{2n - 1} \right). \tag{A 8}$$

From (A 2),

$$\begin{aligned} K_{nm} &= \frac{4}{n(n + 1)m(m + 1)} \int_{-1}^1 xP'_n(1 - x^2)P'_m dx \\ &= \frac{4}{n(n + 1)} \int_{-1}^1 (nI_n + P_{n-1})P'_m dx \quad (\text{by parts and using (A 3)}) \\ &= \frac{4}{n(n + 1)} \int_{-1}^1 \left(\frac{n}{2n + 1}P_{n+1} + \frac{n + 1}{2n + 1}P_{n-1} \right) P'_m dx \quad (\text{using (A 4)}) \\ &= \frac{8}{2n + 1} \left[\frac{\delta_{m,n+1}}{(n + 1)(2n + 3)} + \frac{\delta_{m,n-1}}{n(2n - 1)} \right]. \end{aligned} \tag{A 9}$$

Appendix B. Proof of (3.5a)

We prove by induction the first of the formulae in (3.5); proofs of the others are similar. Let

$$Q_n(k) = \int_0^\pi \sin \theta P_n(\cos \theta) \sin k\theta d\theta, \tag{B 1}$$

so that

$$a_n^{(s)} = \frac{2n+1}{2} Q_n(k), \quad (\text{B } 2)$$

from the first of (3.4a). The result we seek to prove is

$$Q_n(k) = (-1)^n 2k [(-1)^{n+1} + \cos k\pi] \eta(k, n), \quad (\text{B } 3)$$

where $\eta(k, n)$ is given by (3.6). From (B 1) and (A 4), we have

$$\begin{aligned} Q_{n+1}(k) &= \int_0^\pi \sin k\theta \sin \theta \left[\frac{2n+1}{n+1} \cos \theta P_n - \frac{n}{n+1} P_{n-1} \right] d\theta \\ &= -\frac{n}{n+1} Q_{n-1}(k) + \frac{2n+1}{n+1} \int_0^\pi \sin k\theta \sin \theta \cos \theta P_n d\theta \\ &= -\frac{n}{n+1} Q_{n-1}(k) + \frac{2n+1}{2(n+1)} \int_0^\pi [\sin(k+1)\theta + \sin(k-1)\theta] \sin \theta P_n d\theta \\ &= -\frac{n}{n+1} Q_{n-1}(k) + \frac{2n+1}{2(n+1)} [Q_n(k+1) + Q_n(k-1)]. \end{aligned} \quad (\text{B } 4)$$

Now suppose that (B 3) is true for Q_{n-1} and Q_n , for all k , substitute it into the right-hand side of (B 4), and after some algebra indeed obtain (B 3) with n replaced by $n+1$. The induction can be shown to start, with $n=1$ and $n=2$, using the standard identities

$$\Gamma(z+1) = z\Gamma(z) \quad (\text{B } 5)$$

$$\Gamma(z)\Gamma(1-z) = -z\Gamma(-z)\Gamma(z) = \frac{\pi}{\sin(\pi z)}. \quad (\text{B } 6)$$

Thus, (B 3) and hence (3.5a) are proved.

Appendix C. Flagellar flow fields

To investigate the time-dependent flow fields produced by individual eukaryotic flagella, Brumley *et al.* (2014) isolated individual cells from colonies of *V. carteri*, captured and oriented them using glass micropipettes, and imaged the motion of 0.5 μm polystyrene microspheres within the fluid at 1000 f.p.s. One such movie is included as movie S3, which shows the time-dependent motion of these passive tracers in the vicinity of the beating flagellum. Using custom-made tracking routines, we identify the trajectories of the microspheres, and these are shown in figure 12(a), together with the tracked flagellar waveform over several beats. Tracer particles in the immediate vicinity of the flagellar tip exhibit very little back flow during the recovery stroke.

We consider now the flow field produced by a simple model flagellum, which consists of a sphere of radius b driven at a constant angular speed ω around a circular trajectory of radius R_0 , perpendicular to an infinite no-slip boundary. The trajectory of the sphere is given by

$$\mathbf{x}_1(t) = \mathbf{x}_0 + R_0(\cos \omega t \hat{\mathbf{z}} + \sin \omega t \hat{\mathbf{y}}), \quad (\text{C } 1)$$

where $\mathbf{x}_0 = h\hat{\mathbf{z}}$. The velocity of the particle is then

$$\mathbf{v}_1 = \dot{\mathbf{x}}_1 = \omega R_0(-\sin \omega t \hat{\mathbf{z}} + \cos \omega t \hat{\mathbf{y}}). \quad (\text{C } 2)$$

The force that this particle imparts on the fluid is given by

$$\mathbf{F}_1 = \gamma_1 \cdot \mathbf{v}_1 = \gamma_0 \left[\mathbf{I} + \frac{9b}{16z(t)} (\mathbf{I} + \hat{\mathbf{z}}\hat{\mathbf{z}}) \right] \cdot \mathbf{v}_1. \quad (\text{C } 3)$$

We know that $z(t) = h + R_0 \cos \omega t$, and therefore the time-dependent force exerted on the fluid is

$$\mathbf{F}_1(t) = \gamma_0 \omega R_0 \left[\cos \omega t \hat{\mathbf{y}} - \sin \omega t \hat{\mathbf{z}} + \frac{9b}{16(h + R_0 \cos \omega t)} (\cos \omega t \hat{\mathbf{y}} - 2 \sin \omega t \hat{\mathbf{z}}) \right]. \quad (\text{C } 4)$$

The fluid velocity $\mathbf{u}(\mathbf{x})$ at position \mathbf{x} is expressed in terms of the Green's function in the presence of the no-slip boundary condition (Blake 1971a):

$$\mathbf{u}(\mathbf{x}) = \mathbf{G}(\mathbf{x}_1(t), \mathbf{x}) \cdot \mathbf{F}_1(t), \quad (\text{C } 5)$$

where

$$\mathbf{G}(\mathbf{x}_i, \mathbf{x}) = \mathbf{G}^S(\mathbf{x} - \mathbf{x}_i) - \mathbf{G}^S(\mathbf{x} - \bar{\mathbf{x}}_i) + 2z_i^2 \mathbf{G}^D(\mathbf{x} - \bar{\mathbf{x}}_i) - 2z_i \mathbf{G}^{SD}(\mathbf{x} - \bar{\mathbf{x}}_i) \quad (\text{C } 6)$$

and

$$\mathbf{G}_{\alpha\beta}^S(\mathbf{x}) = \frac{1}{8\pi\mu} \left(\frac{\delta_{\alpha\beta}}{|\mathbf{x}|} + \frac{\mathbf{x}_\alpha \mathbf{x}_\beta}{|\mathbf{x}|^3} \right), \quad (\text{C } 7)$$

$$\mathbf{G}_{\alpha\beta}^D(\mathbf{x}) = \frac{1}{8\pi\mu} (1 - 2\delta_{\beta z}) \frac{\partial}{\partial x_\beta} \left(\frac{x_\alpha}{|\mathbf{x}|^3} \right), \quad (\text{C } 8)$$

$$\mathbf{G}_{\alpha\beta}^{SD}(\mathbf{x}) = (1 - 2\delta_{\beta z}) \frac{\partial}{\partial x_\beta} \mathbf{G}_{\alpha z}^S(\mathbf{x}). \quad (\text{C } 9)$$

For a passive tracer with initial position $\mathbf{x} = \mathbf{X}_0$ at $t = t_0$, its trajectory can be calculated according to

$$\mathbf{x}(t) - \mathbf{X}_0 = \int_{t_0}^t \mathbf{G}(\mathbf{x}_1(\tau), \mathbf{x}(\tau)) \cdot \mathbf{F}_1(\tau) d\tau. \quad (\text{C } 10)$$

Numerical solutions of (C 10) are shown in figure 12(b) for various initial positions. The parameters used are designed to mimic those of real *Volvox* flagella ($h = 10 \mu\text{m}$, $R_0 = 5 \mu\text{m}$). A sphere of radius $b = 5 \mu\text{m}$ is used, though we emphasise that strictly speaking this does not come into contact with the plane. The finite value of b is used simply to generate variable drag as a function of height, in order to produce a net flow. In addition, the particle trajectories are independent of the speed of the sphere, and so the results in figure 12(b) would be unchanged if the sphere were instead driven by either a constant force, or by a phase-dependent term.

Appendix D. Rotated ellipse

In this section, we consider the case in which the elliptical trajectory of the flagellar tip is rotated at an angle ψ with respect to the surface of the *Volvox* colony. In this case, (3.1) and (3.2) can be generalised to become

$$R - a = \cos \psi [a\epsilon \sin(k\theta_0 - \sigma t)] - \sin \psi [a\epsilon \delta \sin(k\theta_0 - \sigma t - \chi)], \quad (\text{D } 1)$$

$$\theta - \theta_0 = \cos \psi [\epsilon \delta \sin(k\theta_0 - \sigma t - \chi)] + \sin \psi [\epsilon \sin(k\theta_0 - \sigma t)]. \quad (\text{D } 2)$$

The series expansions for these are then given by

$$\sum_{n=0}^{\infty} \alpha_n(t) P_n(\cos \theta_0) = \cos \psi \sin(k\theta_0 - \sigma t) - \delta \sin \psi \sin(k\theta_0 - \sigma t - \chi), \quad (\text{D } 3)$$

$$\sum_{n=1}^{\infty} \beta_n(t) V_n(\cos \theta_0) = \delta \cos \psi \sin(k\theta_0 - \sigma t - \chi) + \sin \psi \sin(k\theta_0 - \sigma t), \quad (\text{D } 4)$$

and $\gamma_n(t) = \tau \beta_n(t)$ as before. Equations (D 3) and (D 4) need to be solved for α_n and β_n , but this follows easily by linearity using the solutions in (3.7a) and (3.7b), together with appropriate transformations in t . Calculation of $\bar{\Omega}^{(2)}$ and $\bar{U}^{(2)}$ is more challenging, but after considerable algebra, we find the following:

$$\begin{aligned} \bar{\Omega}^{(2)} = & 18\sigma\tau\eta(k, 1)\eta(k, 2) \sin k\pi[(\delta^2 - 1) \cos 2\psi + 1 + \delta^2 + 2\delta \cos \chi \sin 2\psi] \\ & + \frac{3}{2}\sigma\tau \sin k\pi \sum_{n=2}^{\infty} \eta(k, n)\eta(k, n+1)(-1)^{n+1}(n+1)(n+2) \\ & \times [n(n+1)(\delta^2 - 1) \cos 2\psi + k(2n+3)\delta \sin \chi \\ & + n(n+1)(1 + \delta^2 + 2\delta \cos \chi \sin 2\psi)], \end{aligned} \quad (\text{D } 5)$$

and

$$\begin{aligned} \bar{U}^{(2)} = & -6a\sigma\eta(k, 1)\eta(k, 2) \sin k\pi \\ & \times \left[\frac{3\delta \sin \chi}{k} + 2(\delta^2 + 2\delta \cos \chi \sin 2\psi + 1) + 2(\delta^2 - 1) \cos 2\psi \right] \\ & + \frac{1}{2}a\sigma \sin k\pi \sum_{n=2}^{\infty} (-1)^n \eta(k, n)\eta(k, n+1) [4k\delta(n+1)(2n^2 + 3n + 2) \sin \chi \\ & + k^2(2n^2 - 2n - 1)[(\delta^2 - 1) \cos 2\psi - \delta^2 + 2\delta \cos \chi \sin 2\psi - 1] \\ & + 2n(n+2)(n+1)^2[(\delta^2 - 1) \cos 2\psi + \delta^2 + 2\delta \cos \chi \sin 2\psi + 1]]. \end{aligned} \quad (\text{D } 6)$$

Note that (D 5) and (D 6) reduce to (3.8) and (3.9) respectively when $\psi = 0$.

REFERENCES

- ANDERSON, J. L. & PRIEVE, D. C. 1991 Diffusiophoresis caused by gradients of strongly adsorbing solutes. *Langmuir* **7**, 403–406.
- BLAKE, J. R. 1971a A note on the image system for a Stokeslet in a no-slip boundary. *Proc. Camb. Phil. Soc.* **70**, 303–310.
- BLAKE, J. R. 1971b A spherical envelope approach to ciliary propulsion. *J. Fluid Mech.* **46**, 199–208.
- BLAKE, J. R. 1972 A model for the micro-structure in ciliated organisms. *J. Fluid Mech.* **55**, 1–23.
- BRENNEN, C. & WINET, H. 1977 Fluid mechanics of propulsion by cilia and flagella. *Annu. Rev. Fluid Mech.* **9**, 339–398.
- BRUMLEY, D. R., POLIN, M., PEDLEY, T. J. & GOLDSTEIN, R. E. 2012 Hydrodynamic synchronization and metachronal waves on the surface of the colonial alga *Volvox carteri*. *Phys. Rev. Lett.* **109**, 268102.
- BRUMLEY, D. R., POLIN, M., PEDLEY, T. J. & GOLDSTEIN, R. E. 2015a Metachronal waves in the flagellar beating of *Volvox* and their hydrodynamic origin. *J. R. Soc. Interface* **12**, 20141358.
- BRUMLEY, D. R., RUSCONI, R., SON, K. & STOCKER, R. 2015b Flagella, flexibility and flow: physical processes in microbial ecology. *Eur. Phys. J. Special Topics* **224** (17–18), 3119–3140.

- BRUMLEY, D. R., WAN, K. Y., POLIN, M. & GOLDSTEIN, R. E. 2014 Flagellar synchronization through direct hydrodynamic interactions. *eLife* **3**, 02750.
- BRUOT, N. & CICUTA, P. 2016 Realizing the physics of motile cilia synchronization with driven colloids. *Annu. Rev. Condens. Matter Phys.* **7**, 323–348.
- DRESCHER, K., LEPTOS, K. C., TUVAL, I., ISHIKAWA, T., PEDLEY, T. J. & GOLDSTEIN, R. E. 2009 Dancing *Volvox*: hydrodynamic bound states of swimming algae. *Phys. Rev. Lett.* **102**, 168101.
- DRUMMOND, J. E. 1966 Propulsion by oscillating sheets and tubes in a viscous fluid. *J. Fluid Mech.* **25**, 787–793.
- FELDERHOF, B. U. 2016 Spinning swimming of volvox by tangential helical wave, [arXiv:1601.00755](https://arxiv.org/abs/1601.00755).
- FELDERHOF, B. U. & JONES, R. B. 2016 Stokesian swimming of a sphere at low Reynolds number, [arXiv:1602.01249](https://arxiv.org/abs/1602.01249).
- GHOSE, S. & ADHIKARI, R. 2014 Irreducible representations of oscillatory and swirling flows in active soft matter. *Phys. Rev. Lett.* **112**, 118102.
- GOLDSTEIN, R. E. 2015 Green algae as model organisms for biological fluid dynamics. *Annu. Rev. Fluid Mech.* **47**, 343–375.
- HOOPS, H. J. 1993 Flagellar, cellular and organismal polarity in *Volvox carteri*. *J. Cell Sci.* **104**, 105–117.
- HOOPS, H. J. 1997 Motility in the colonial and multicellular volvocales: structure, function, and evolution. *Protoplasma* **199**, 99–112.
- VAN LEEUWENHOEK, A. 1700 IV. Part of a letter from Mr. Antony van Leeuwenhoek, concerning the worms in sheeps livers, gnats, and animalcula in the excrements of frogs. *Phil. Trans. R. Soc. Lond.* **22**, 509–518.
- LENZ, P. & RYSKIN, A. 2006 Collective effects in ciliary arrays. *Phys. Biol.* **3**, 285–294.
- LIGHTHILL, M. J. 1952 On the squirming motion of nearly spherical deformable bodies through liquids at very small Reynolds numbers. *Commun. Pure Appl. Maths* **5**, 109–118.
- LINNAEUS, C. 1758 *Systema Naturae*, 10th edn. Impensis Laurentii Salvii.
- NIEDERMAYER, T., ECKHARDT, B. & LENZ, P. 2008 Synchronization, phase locking and metachronal wave formation in ciliary chains. *Chaos* **18**, 37128.
- PAK, O. S. & LAUGA, E. 2014 Generalized squirming motion of a sphere. *J. Engng Maths* **88**, 1–28.
- SLEIGH, M. A. 1962 *The Biology of Cilia and Flagella*. Pergamon.
- SOLARI, C. A., DRESCHER, K., GANGULY, S., KESSLER, J. O., MICHOD, R. E. & GOLDSTEIN, R. E. 2011 Flagellar phenotypic plasticity in volvoclean algae correlates with Peclet number. *J. R. Soc. Interface* **10**, 20110023.
- SOLARI, C. A., GANGULY, S., KESSLER, J. O., MICHOD, R. E. & GOLDSTEIN, R. E. 2006 Multicellularity and the functional interdependence of motility and molecular transport. *Proc. Natl Acad. Sci. USA* **103**, 1353–1358.
- STONE, H. A. & SAMUEL, A. D. T. 1996 Propulsion of microorganisms by surface distortions. *Phys. Rev. Lett.* **77**, 4102–4104.
- UCHIDA, N. & GOLESTANIAN, R. 2011 Generic conditions for hydrodynamic synchronization. *Phys. Rev. Lett.* **106**, 58104.
- VILFAN, A. & JÜLICHER, F. 2006 Hydrodynamic flow patterns and synchronization of beating cilia. *Phys. Rev. Lett.* **96**, 58102.